

ONEhalf20

Model RTO

Oil Filled Melt Pressure Transmitter
Food, Packaging & Medical Processing Applications

Product Introduction

ONEhalf20 Model RTO Oil Filled Melt Pressure Transmitter is designed specifically for food, packaging and medical processing applications. The food grade oil fill material meets the requirements of both the FDA and the USDA. This series of melt pressure transmitter utilizes a Wheatstone Bridge - bonded strain gauge design insuring high accuracy, reliability and repeatability.

ONEhalf20 Model RTO Oil Filled Melt Pressure Transmitter comes standard in a 6" rigid stem configuration with a 6-pin Bendix style connector.

General Specifications

Mechanical

Pressure Ranges: 0-1,000 psi to 0-10,000 psi

metric ranges available

Mounting: 1/2-20 UNF thread

Mounting Torque: 500 inch pounds maximum

Diaphragm: 15-5PH stainless steel

Overload Capacity: 2 times FSO

Temperatures: diaphragm 615°F*

electronics 225°F

Accuracy: 1% FSO

Repeatability: better than 0.20% FSO

Zero Balance: +/- 10% FSO

* Recommended maximum diaphragm temperature for extended product life 527°F (275°C).

Electrical

Type: bonded strain gauge,
4 leg Wheatstone Bridge

Bridge Resistance: 350 Ohm +/- 10%

Connector: 6 pin Bendix style bayonet

Output: 4-20 mA or 0-10 Vdc

Excitation Voltage: 24 Vdc

Calibration: internal 80% FSO

Insulation: 1,000 Megohms at 50 Vdc

Features

- zero and span adjustment pots for precise output
- internal 80% shunt calibration
- direct replacement for competitor's models utilizing the Bendix 6 pin bayonet style connector
- all welded all stainless steel construction

Model RTO



Benefits

- significant price/performance advantage over competitor's models
- reliable, repeatable and accurate pressure measurements
- ease of calibration and installation
- fill material meets the requirements of both the FDA and USDA
- wide variety of pressure ranges
- two year warranty



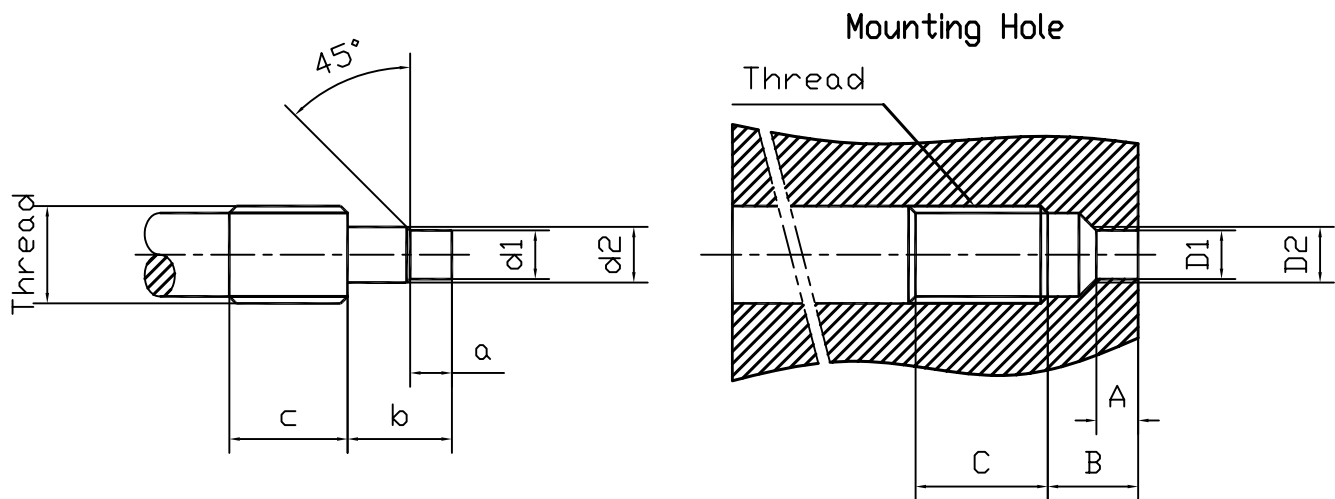
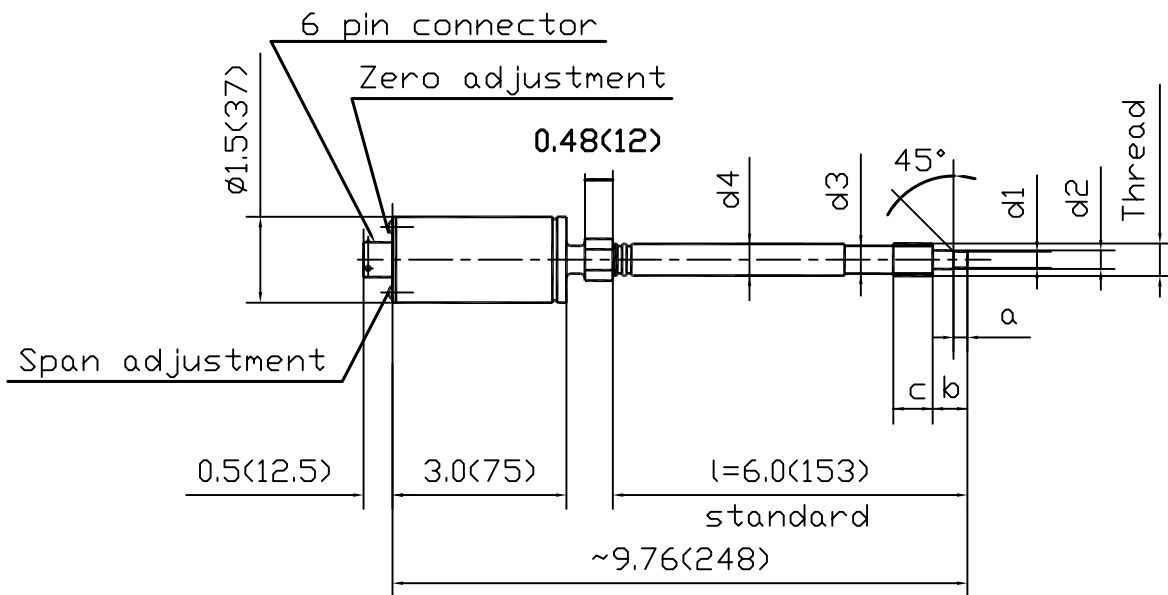
Model RTO

Oil Filled Melt Pressure Transmitter
Food, Packaging & Medical Processing Applications

Ordering Guide

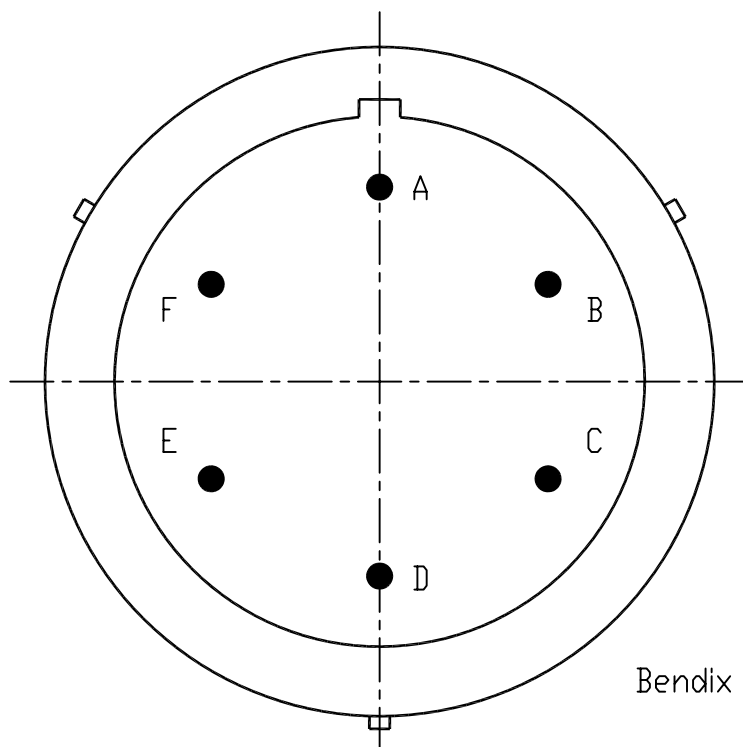
<u>Model Number</u>	<u>Transducer Style</u>
RTO	rigid stem only
<u>Accuracy</u>	
"no designation"	1.0% Accuracy - standard
<u>Rigid Stem Length</u>	
3	3"
6	6" - standard
12	12"
<u>Output</u>	
MA	4-20 mA
V	0 -10 Vdc
<u>Standard Pressure Ranges</u>	
-1M	0 - 1,000 psi
-1.5M	0 - 1,500 psi
-3M	0 - 3,000 psi
-5M	0 - 5,000 psi
-7.5M	0 - 7,500 psi
-10M	0 - 10,000 psi
-70B	0 - 70 bar
-1CB	0 - 100 bar
-2CB	0 - 200 bar
-3.5CB	0 - 350 bar
-5CB	0 - 500 bar
-7CB	0 - 700 bar
<u>Common Options</u>	
-8PIN	8 pin connector in place of standard 6 pin
-M18	M18 X 1.5 metric thread in place of 1/2-20 UNF
For configurations not listed please contact your local ONEhalf20 distributor.	

North America Toll Free: 877 781-1881
Other Locations 416 781-1881
www.onehalf20.com



Thread	d1	d2	a	b	c	d3	d4
1/2"-20	0.307(7.8) 0.303(7.7)	0.413(10.5) 0.407(10.35)	0.217(5.5) 0.211(5.35)	0.441(11.2) 0.433(11.0)	0.629(16)	0.41(10.5)	0.5(12.7)
M14x1.5	0.307(7.8) 0.303(7.7)	0.465(11.8) 0.457(11.6)	0.217(5.5) 0.211(5.35)	0.441(11.2) 0.433(11.0)	0.708(18)	0.47(12.0)	0.54(13.7)
M18x1.5	0.394(10.0) 0.386(9.8)	0.610(15.5) 0.602(15.3)	0.236(6.0) 0.230(5.85)	0.551(14.0) 0.543(13.8)	0.787(20)	0.63(16.0)	0.669(17.0)

Thread	D1	D2	A	B	C
1/2"-20	0.314(7.98) 0.312(7.92)	0.458(11.65) 0.452(11.47)	0.225(5.72)	0.395(10.02)	0.75(19)
M14x1.5	0.314(7.98) 0.312(7.92)	0.512(13.0) 0.504(12.8)	0.225(5.72)	0.395(10.02)	0.827(21)
M18x1.5	0.401(10.19) 0.399(10.13)	0.638(16.2) 0.634(16.1)	0.242(6.15)	0.402(10.15)	1.00(25.4)



Bendix PT02-10-6P or Equivalent

	mA Output (Excitation-24Vdc)	Volt Output (Excitation-24Vdc)
Pin A/Red	Input/Signal(+)	Signal(+)
Pin B/Black	Input/Signal(-)	Signal(-)
Pin C/White	No Connection	Excitation(+)
Pin D/Green	No Connection	Excitation(-)
Pin E/Blue	Calibration 1	Calibration 1
Pin F/Orange	Calibration 2	Calibration 2