

The logo for ONEhalf20, featuring the text "ONEhalf20" in a stylized, bold font. The "ONE" is in a larger, bolder font than "half20". The "half" is in a smaller font, and the "20" is in a larger font. The logo is set against a background of a pressure gauge with red markings.

Extruder Rupture Disks

with 1/2 - 20UNF - 2A Mounting Thread

Product Introduction

ONEhalf20 Extruder Rupture Disks are designed for emergency relief of excess pressure in plastics processing machinery. They are designed to instantaneously rupture at a predetermined pressure. The **ONEhalf20** RD Series Rupture Disks are available in a variety of lengths and burst pressures.

ONEhalf20 Extruder Rupture Disks may be specified for primary relief in applications where pressure build-up can occur so rapidly that the response time of a relief valve is inadequate.

Features & Benefits

- burst pressures from 1,500 to 15,000 psi
- 1/2-20 UNF mounting thread
- SS or Inconel disk
- suitable for melt temperatures up to 825°F
- burst pressure accuracy +/- 5%
- low installation and maintenance cost
- all stainless steel body

Ordering Guide

Model Number

RD2
RD3H
RD6H
RD9H
RD12H

Length & Installation

1.82" with slotted head
3" with Hex Head
6" with Hex Head
9" with Hex Head
12" with Hex Head

Standard Rated Burst Pressures

-1.5M	1,500 psi
-2.5M	2,500 psi
-3.5M	3,500 psi
-4.5M	4,500 psi
-5.5M	5,500 psi
-6.5M	6,500 psi
-7.5M	7,500 psi
-8.5M	8,500 psi
-9.5M	9,500 psi
-10.5M	10,500 psi
-12.5M	12,500 psi
-15M	15,000 psi

Options

-1/4NPT

Description

1/4 X 18 NPT
discharge connection



Example:

RD6H-7.5M, 6" extruder rupture disk with Hex Head
rated for 7,500 psi burst pressure.

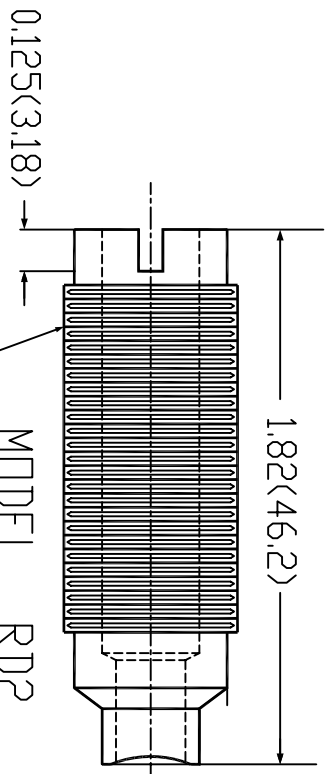
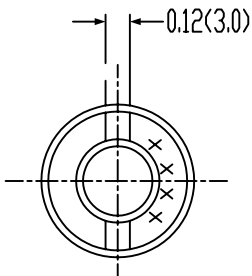
North America Toll Free 877 781-1881

Other Locations 416 781-1881

www.onehalf20.com

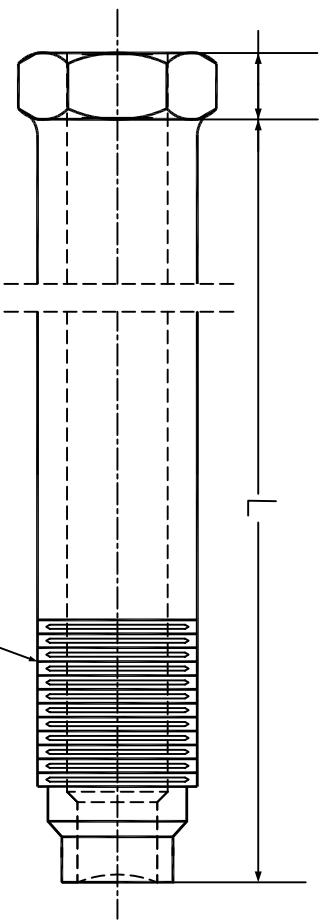
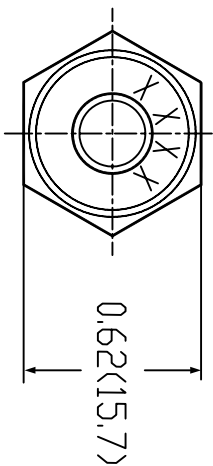


1/2"-20 UNF Rupture disk configurations Dimensional Drawing Inches(mm)



Thread: 1/2"-20UNF-2A

MODEL RD2

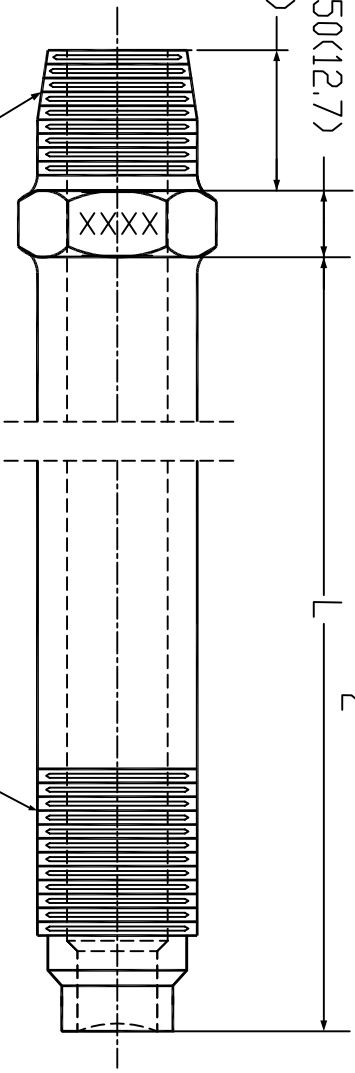
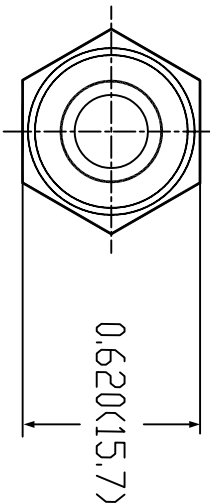


Thread: $\frac{1}{2}$ "-20UNF-2A

MODEL-1/4NPT

0.875(22.23)

0.50(12.7)



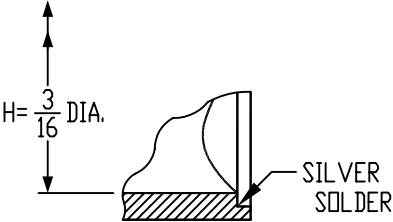
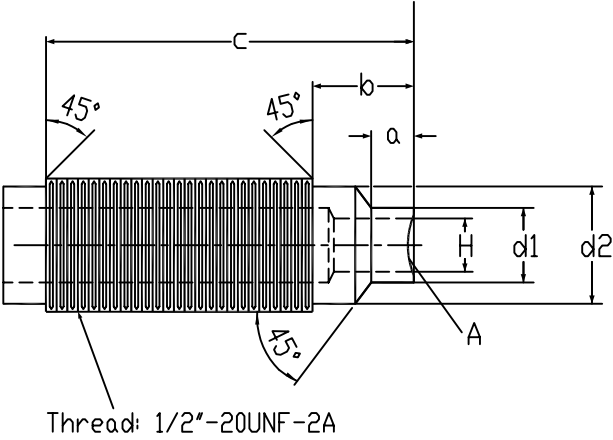
1/4"NPT

Thread: $\frac{1}{2}$ "-20UNF-2A

MODEL	RD3H	RD6H	RD9H	RD12H
L=	3.00(76.2)	6.00(152.4)	9.00(228.6)	12.00(304.8)

a	b	c
0.250(6.35) 0.234(5.94)	0.50(12.7)	1.63(41.40)

H	d1	d2
3/16" (4.76)	ø0.310(7.87) ø0.305(7.75)	ø0.420(10.67) ø0.410(10.41)



DETAIL A