

The logo for ONEhalf20, featuring the text "ONEhalf20" in a stylized, bold font. The "ONE" is in a larger, bolder font than "half20". The "half" is in a smaller font, and the "20" is in a larger font. The logo is set against a background of a pressure gauge with red markings.

Extruder Rupture Disks

with 3/4 - 16 UNF Mounting Thread

Product Introduction

ONEhalf20 Extruder Rupture Disks are designed for emergency relief of excess pressure in plastics processing machinery. They are designed to instantaneously rupture at a predetermined pressure. The **ONEhalf20** RD Series Rupture Disks are available in a variety of lengths and burst pressures.

ONEhalf20 Extruder Rupture Disks may be specified for primary relief in applications where pressure build-up can occur so rapidly that the response time of a relief valve is inadequate.

Features & Benefits

- burst pressures from 1,500 to 9,500 psi
- 3/4 - 16 UNF mounting thread
- SS or Inconel disk
- suitable for melt temperatures up to 825°F
- burst pressure accuracy +/- 5%
- low installation and maintenance cost
- all stainless steel body

Ordering Guide

Model Number

RD2
RD4H
RD6H
RD7H
RD9H
RD12H

Length & Installation

2.5" with slotted head
4" with Hex Head
6" with Hex Head
7" with Hex Head
9" with Hex Head
12" with Hex Head

Mounting Thread

-3/4
-3/4S

Description

3/4 - 16 UNF Thread
3/4 - 16 UNF Short Thread

Standard Rated Burst Pressures

-1.5M	1,500 psi
-2.5M	2,500 psi
-3.5M	3,500 psi
-4.5M	4,500 psi
-5M	5,000 psi
-7.5M	7,500 psi
-8.5M	8,500 psi
-9M	9,000 psi
-9.5M	9,500 psi

Options

-1/2NPT

Description

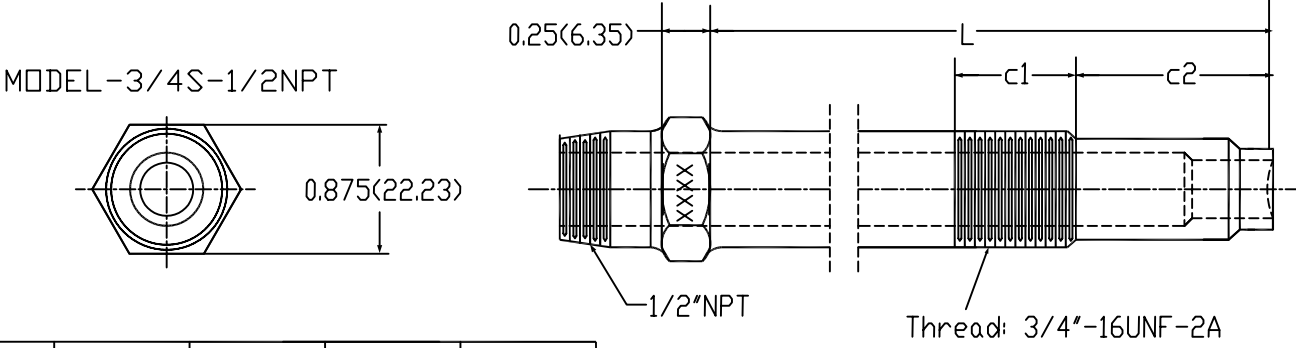
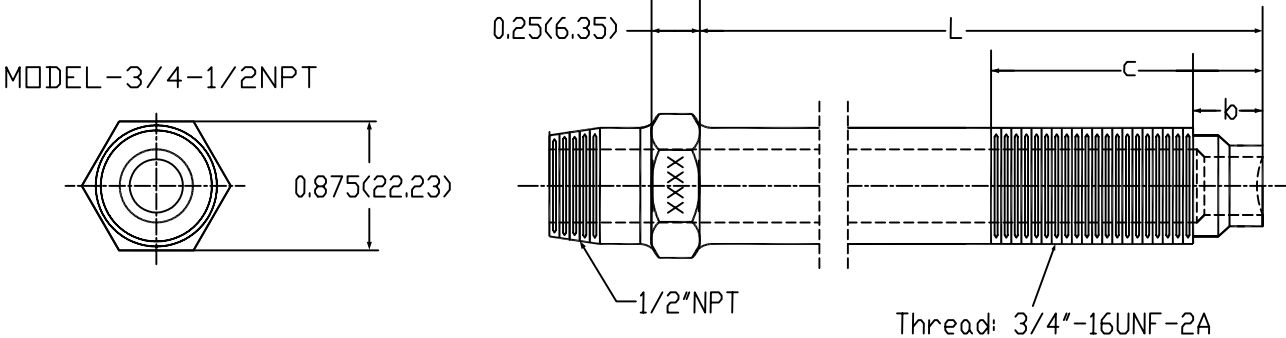
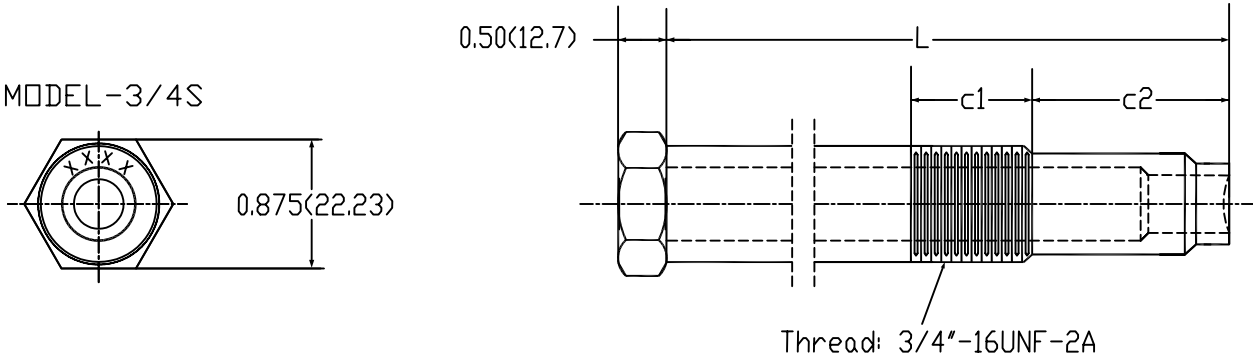
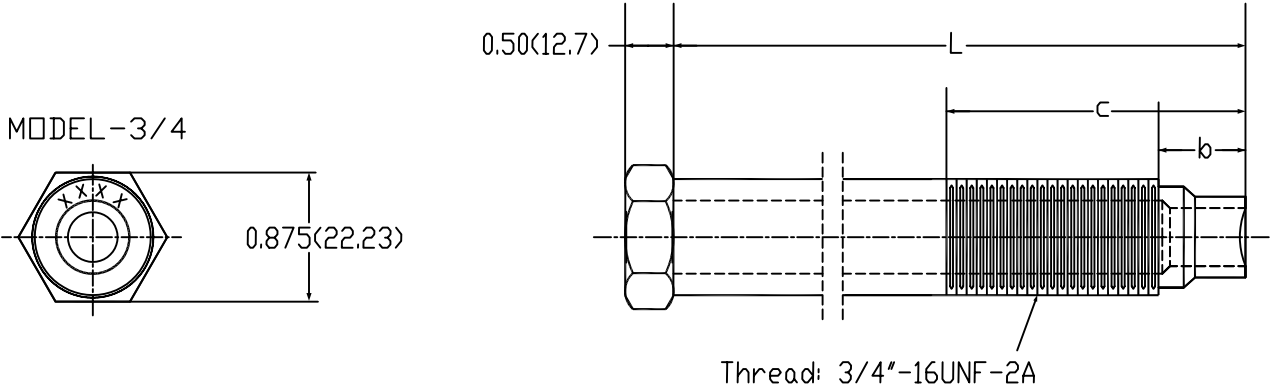
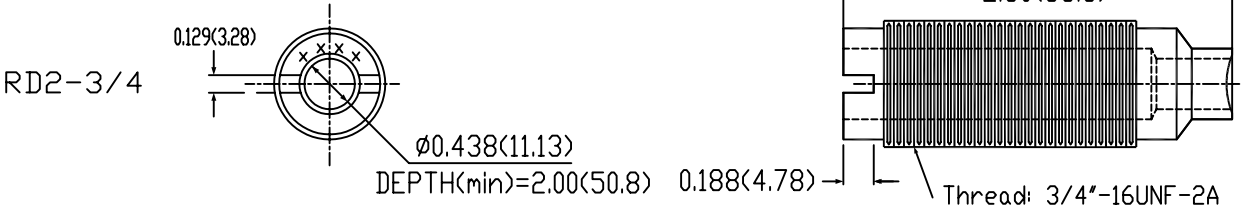
1/2" NPT
discharge connection



North America Toll Free 877 781-1881

Other Locations 416 781-1881

www.onehalf20.com



MODEL	RD4H	RD7H	RD9H	RD12H
L=	4.00(101.6)	7.00(177.8)	9.00(228.6)	12.00(304.8)

3/4"-16 Mounting Thread

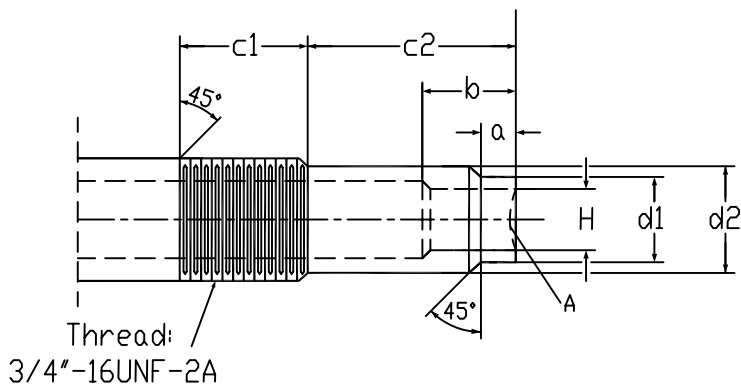
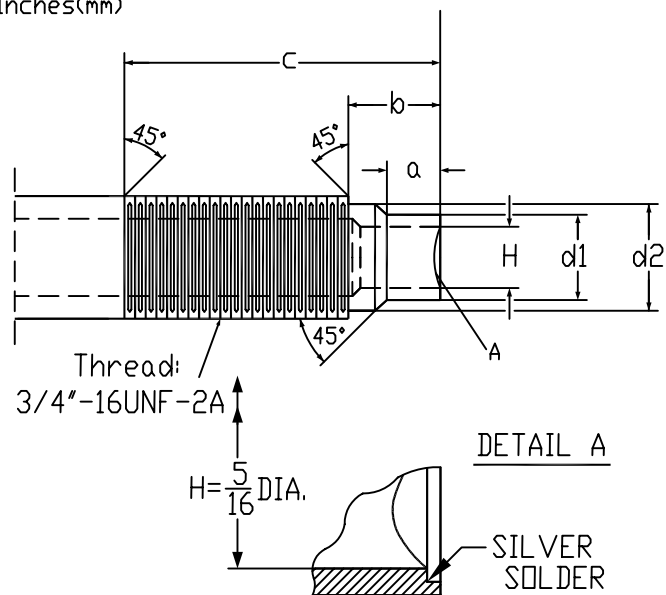
a	b	c
0.300(7.62) 0.312(7.93)	0.545(13.84)	2.70(68.58)

H	d1	d2	d3
5/16"(7.95)	ø0.500(12.70) ø0.495(12.57)	ø0.665(16.89) ø0.655(16.64)	ø0.66(16.76)

3/4"-16 Short Mounting Thread

a	b	c1	c2
0.300(7.62) 0.312(7.93)	0.545(13.84)	1.10(27.94)	1.60(40.64)

H	d1	d2	d3
5/16"(7.95)	ø0.50(12.70) ø0.495(12.57)	ø0.665(16.89) ø0.655(16.64)	ø0.66(16.76)



DATE: January/2006 V1.0