The logo for ONEhalf20, featuring the company name in a stylized, bold font with a horizontal line through the middle of the letters.

# Extruder Rupture Disks

with 5/8 - 11 NC Mounting Thread

## Product Introduction

**ONEhalf20** Extruder Rupture Disks are designed for emergency relief of excess pressure in plastics processing machinery. They are designed to instantaneously rupture at a predetermined pressure. The **ONEhalf20** RD Series Rupture Disks are available in a variety of lengths and burst pressures.

**ONEhalf20** Extruder Rupture Disks may be specified for primary relief in applications where pressure build-up can occur so rapidly that the response time of a relief valve is inadequate.

## Features & Benefits

- burst pressures from 1,500 to 15,000 psi
- 5/8 - 11 NC mounting thread
- SS or Inconel disk
- suitable for melt temperatures up to 825°F
- burst pressure accuracy +/- 5%
- low installation and maintenance cost
- all stainless steel body

## Extruder Rupture Disks With 5/8 x 11 NC Mounting Thread



## Ordering Guide

### Model Number

RD4H-5/8  
RD6H-5/8  
RD9H-5/8

### Length & Installation

4" with Hex Head  
6" with Hex Head  
9" with Hex Head

### Standard Rated Burst Pressures

|        |            |
|--------|------------|
| -1.5M  | 1,500 psi  |
| -2.5M  | 2,500 psi  |
| -3.5M  | 3,500 psi  |
| -4.5M  | 4,500 psi  |
| -5.5M  | 5,500 psi  |
| -6.5M  | 6,500 psi  |
| -7.5M  | 7,500 psi  |
| -8.5M  | 8,500 psi  |
| -9.5M  | 9,500 psi  |
| -10.5M | 10,500 psi |
| -12.5M | 12,500 psi |
| -15M   | 15,000 psi |

### Options

-1/4 NPT

### Description

1/4" NPT  
discharge connection

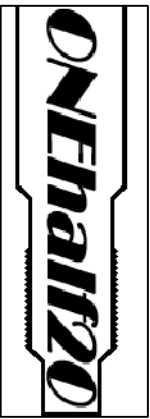
### Example:

RD6H-5/8-7.5M, 6" extruder rupture disk with Hex Head rated for 7,500 psi burst pressure.

North America Toll Free 877 781-1881

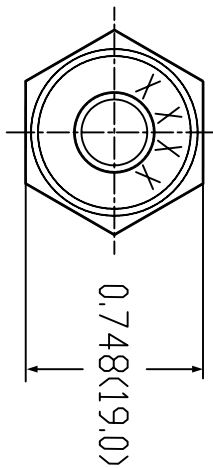
Other Locations 416 781-1881

[www.onehalf20.com](http://www.onehalf20.com)

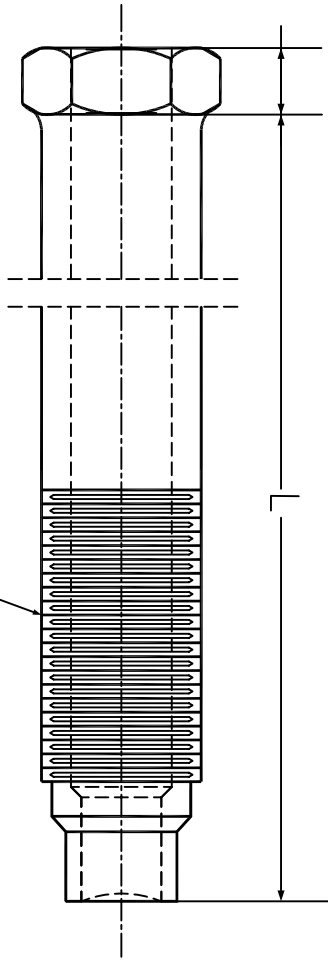


5/8-11 NC Rupture disk configurations      Dimensional Drawing Inches(mm)

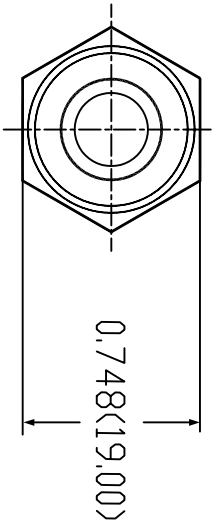
MODEL-5/8



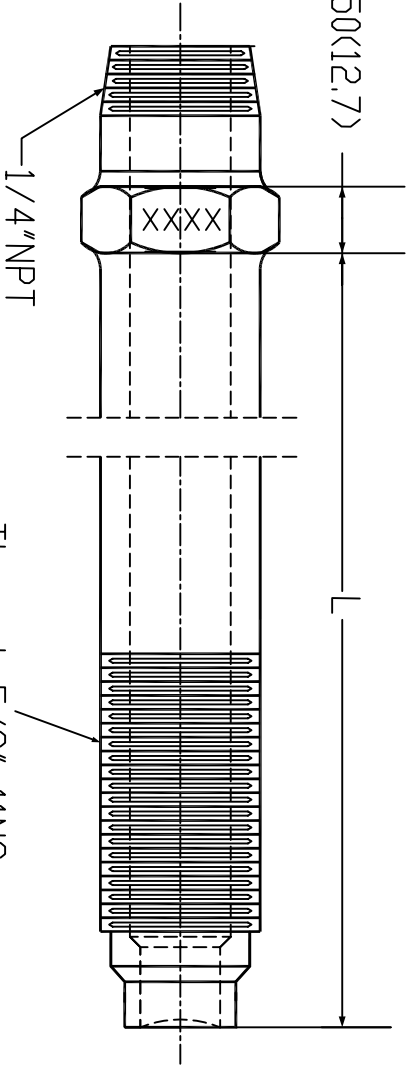
0.50(12.7)



MODEL-5/8-1/4NPT



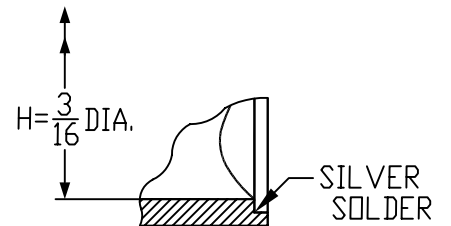
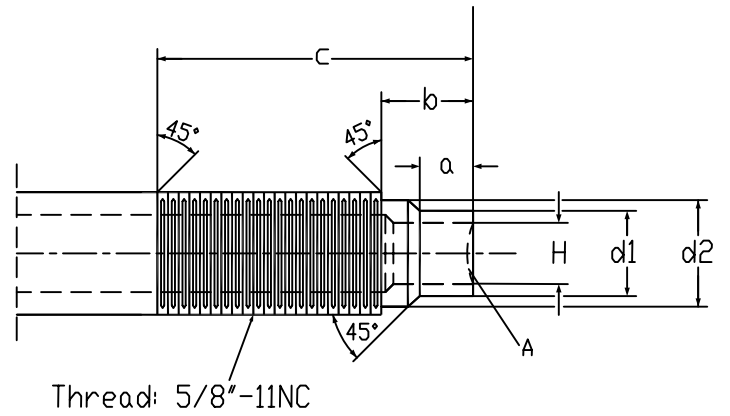
0.50(12.7)



| MODEL | RD4H        | RD6H        | RD9H        |
|-------|-------------|-------------|-------------|
| L=    | 4.00(101.6) | 6.00(152.4) | 9.00(228.6) |

| a           | b            | c           |
|-------------|--------------|-------------|
| 0.238(6.05) | 0.554(14.07) | 2.75(69.85) |

| H           | d1          | d2           |
|-------------|-------------|--------------|
| 3/16"(4.78) | 0.354(8.99) | 0.488(12.40) |



DETAIL A

DATE: January/2006 V1.0