

The logo for ONEhalf20, featuring the brand name in a stylized, bold font with a horizontal line through the middle of the letters.

Extruder Rupture Disks

with M18 x 1.5 Mounting Thread

Product Introduction

ONEhalf20 Extruder Rupture Disks are designed for emergency relief of excess pressure in plastics processing machinery. They are designed to instantaneously rupture at a predetermined pressure. The **ONEhalf20** RD Series Rupture Disks are available in a variety of lengths and burst pressures.

ONEhalf20 Extruder Rupture Disks may be specified for primary relief in applications where pressure build-up can occur so rapidly that the response time of a relief valve is inadequate.

Features & Benefits

- burst pressures from 1,500 to 15,000 psi
- M18 x 1.5 mounting thread
- SS or Inconel disk
- suitable for melt temperatures up to 825°F
- burst pressure accuracy +/- 5%
- low installation and maintenance cost
- all stainless steel body

Ordering Guide

Model Number

RD6H-M18
RD9H-M18
RD12H-M18

Length & Installation

6" with Hex Head
9" with Hex Head
12" with Hex Head

Standard Rated Burst Pressures

-1.5M	1,500 psi
-2.5M	2,500 psi
-3.5M	3,500 psi
-4.5M	4,500 psi
-5.5M	5,500 psi
-6.5M	6,500 psi
-7.5M	7,500 psi
-8.5M	8,500 psi
-9.5M	9,500 psi
-10.5M	10,500 psi
-12.5M	12,500 psi
-15M	15,000 psi

Options

-1/2 NPT

Description

1/2" NPT
discharge connection



North America Toll Free 877 781-1881

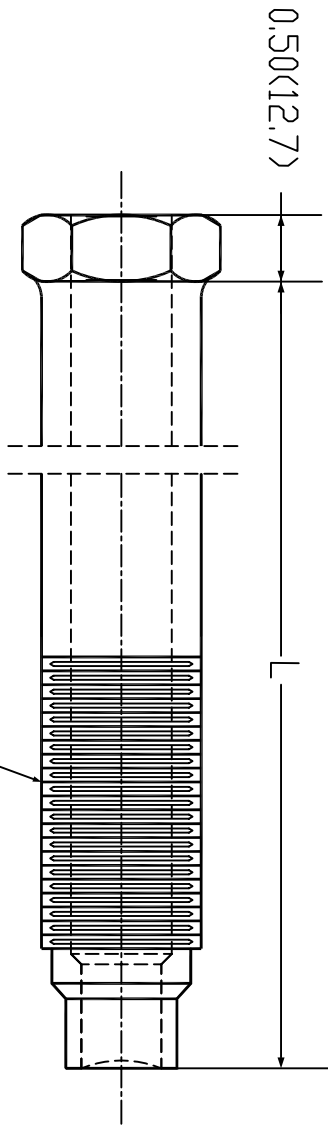
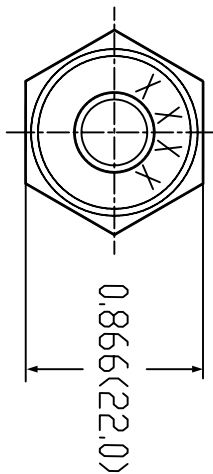
Other Locations 416 781-1881

www.onehalf20.com

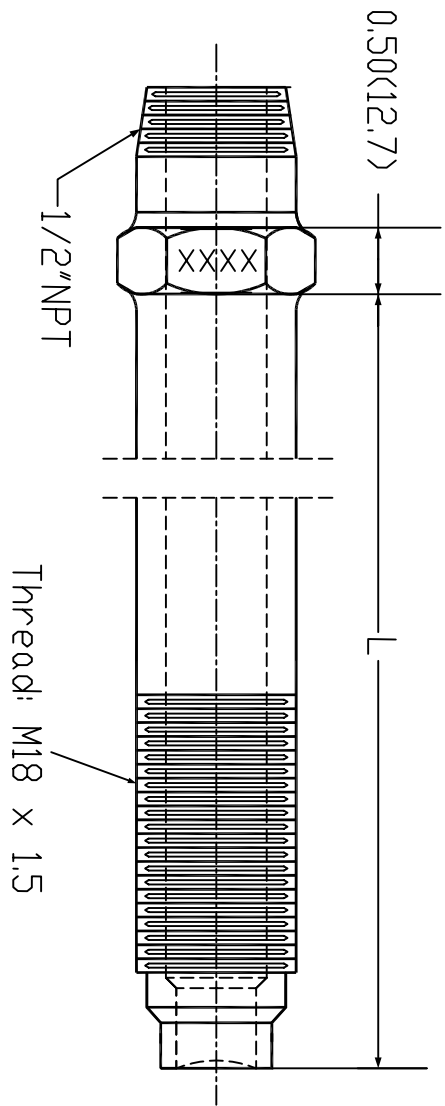
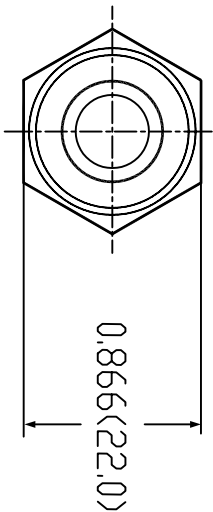


M18 x 1.5 Rupture disk configurations Dimensional Drawing Inches(mm)

MODEL-M18



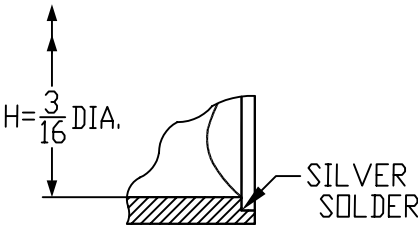
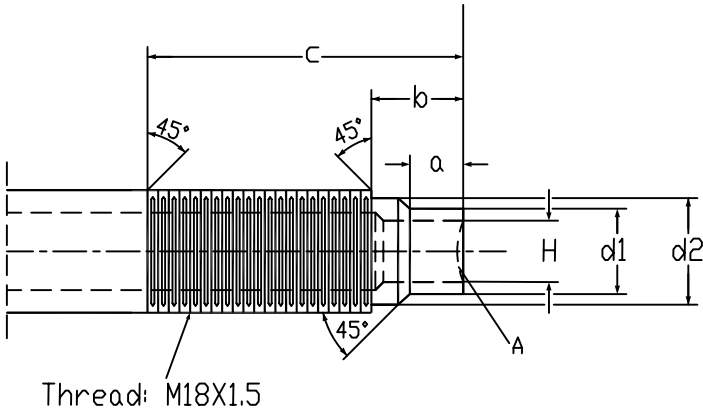
MODEL-M18-1/2NPT



MODEL	RD6H	RD9H	RD12H
L=	6.00(152.4)	9.00(228.6)	12.00(304.8)

a	b	c
0.250(6.35) 0.234(5.94)	0.50(12.7)	1.63(41.40)

H	d1	d2
3/16"(4.78)	ø0.397(10.08) ø0.392(9.96)	ø0.632(16.05) ø0.627(15.93)



DETAIL A