The logo for ONEhalf20, featuring the brand name in a stylized, bold font with a horizontal line through the middle of the letters.

# Model RD6H Extruder Rupture Disk with 1/2 - 20UNF - 2A Mounting Thread

## Product Introduction

**ONEhalf20's** Model RD6H Extruder Rupture Disk is designed for emergency relief of excess pressure in plastics processing machinery. It is designed to instantaneously rupture at a predetermined pressure. The Model RD6H Extruder Rupture Disk is available in a variety of burst pressures.

The Model RD6H may be specified for primary relief in applications where pressure build-up can occur so rapidly that the response time of a relief valve is inadequate.

## Features & Benefits

- burst pressures from 1,500 to 15,000 psi
- 1/2-20 UNF mounting thread
- SS or Inconel disk
- suitable for melt temperatures up to 825°F
- burst pressure accuracy +/- 5%
- low installation and maintenance cost
- all stainless steel body

## Model RD6H Photo



## Model RD6H with 1/4NPT Photo



## Ordering Guide

| <u>Model Number</u> | <u>Length &amp; Installation</u> |
|---------------------|----------------------------------|
| RD6H                | 6.0" with hex head               |

### Standard Rated Burst Pressures

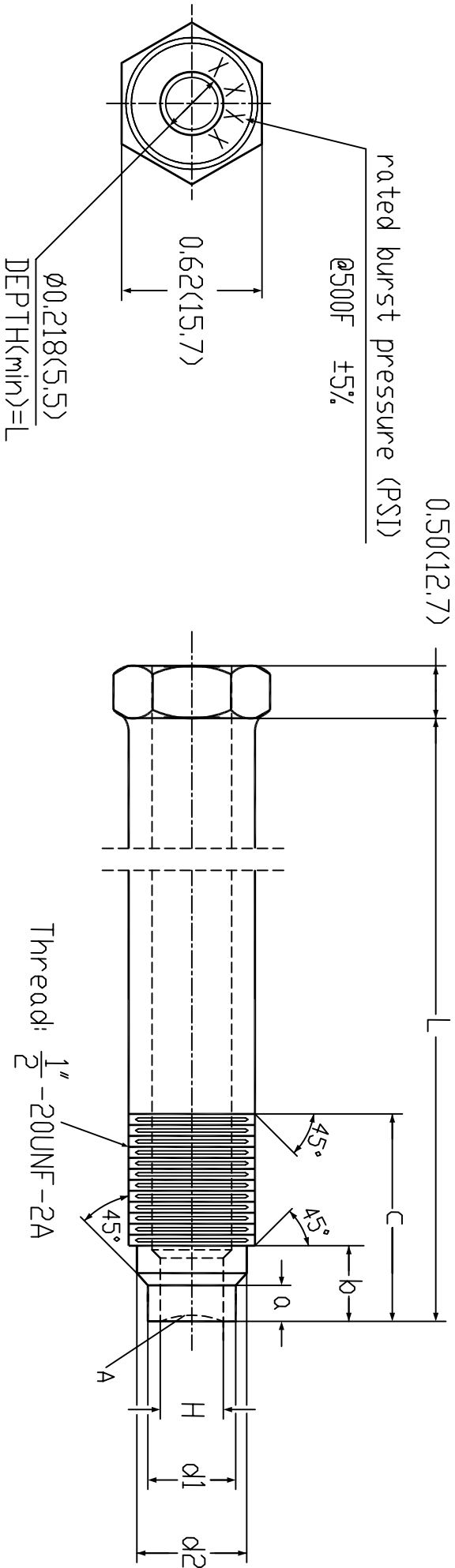
|        |            |
|--------|------------|
| -1.5M  | 1,500 psi  |
| -2.5M  | 2,500 psi  |
| -3.5M  | 3,500 psi  |
| -4.5M  | 4,500 psi  |
| -5.5M  | 5,500 psi  |
| -6.5M  | 6,500 psi  |
| -7.5M  | 7,500 psi  |
| -8.5M  | 8,500 psi  |
| -9.5M  | 9,500 psi  |
| -10.5M | 10,500 psi |
| -12.5M | 12,500 psi |
| -15M   | 15,000 psi |

| <u>Option</u> | <u>Description</u>        |
|---------------|---------------------------|
| 1/4NPT        | 1/4" discharge connection |

### Note:

For burst pressures not listed please consult your **ONEhalf20** distributor..

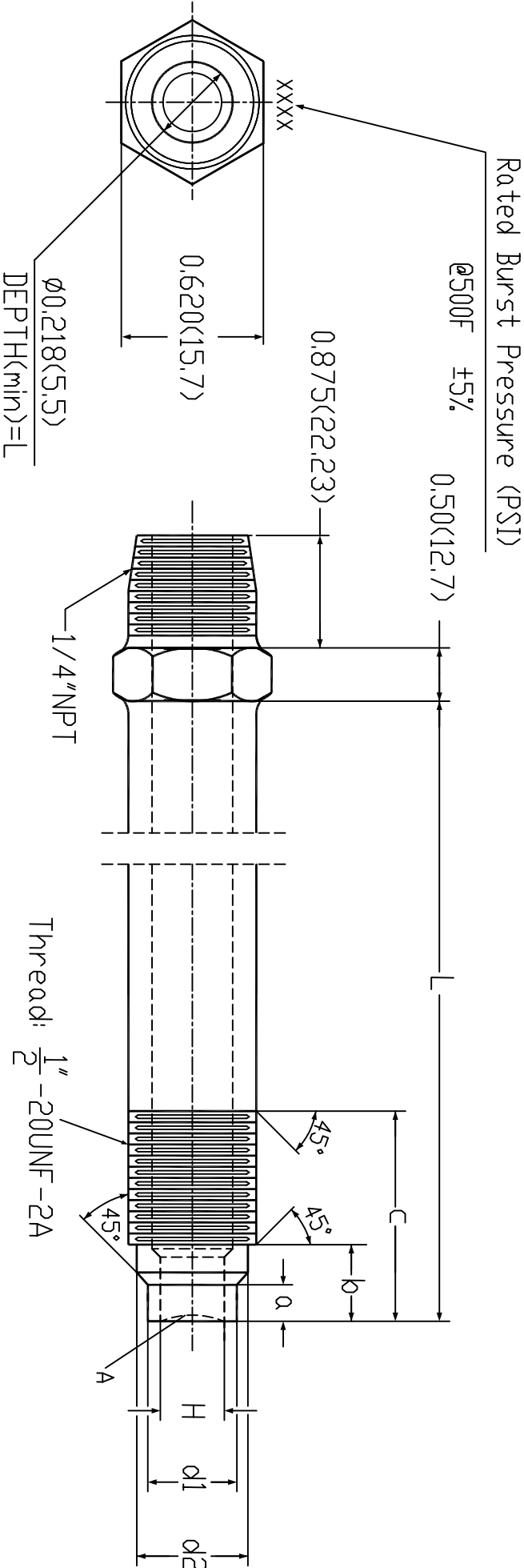
**North America Toll Free 877 781-1881**  
**Other Locations 416 781-1881**  
**[www.onehalf20.com](http://www.onehalf20.com)**



| a                          | b          | c           | L           |
|----------------------------|------------|-------------|-------------|
| 0.250(6.35)<br>0.234(5.94) | 0.50(12.7) | 1.81(45.97) | 6.00(152.4) |

| H            | $\phi 1$                                 | $\phi 2$                                   |
|--------------|--|--|
| 3/16" (4.76) | $\phi 0.310(7.87)$<br>$\phi 0.305(7.75)$ | $\phi 0.420(10.67)$<br>$\phi 0.410(10.41)$ |

DETAIL A



| a                          | b          | c           | L           |
|----------------------------|------------|-------------|-------------|
| 0.250(6.35)<br>0.234(5.94) | 0.50(12.7) | 1.81(45.97) | 6.00(152.4) |

| H            | d1   | d2   |
|--------------|--|--|
| 3/16" (4.76) | $\varnothing 0.310(7.87)$<br>$\varnothing 0.305(7.75)$ | $\varnothing 0.420(10.67)$<br>$\varnothing 0.410(10.41)$ |

