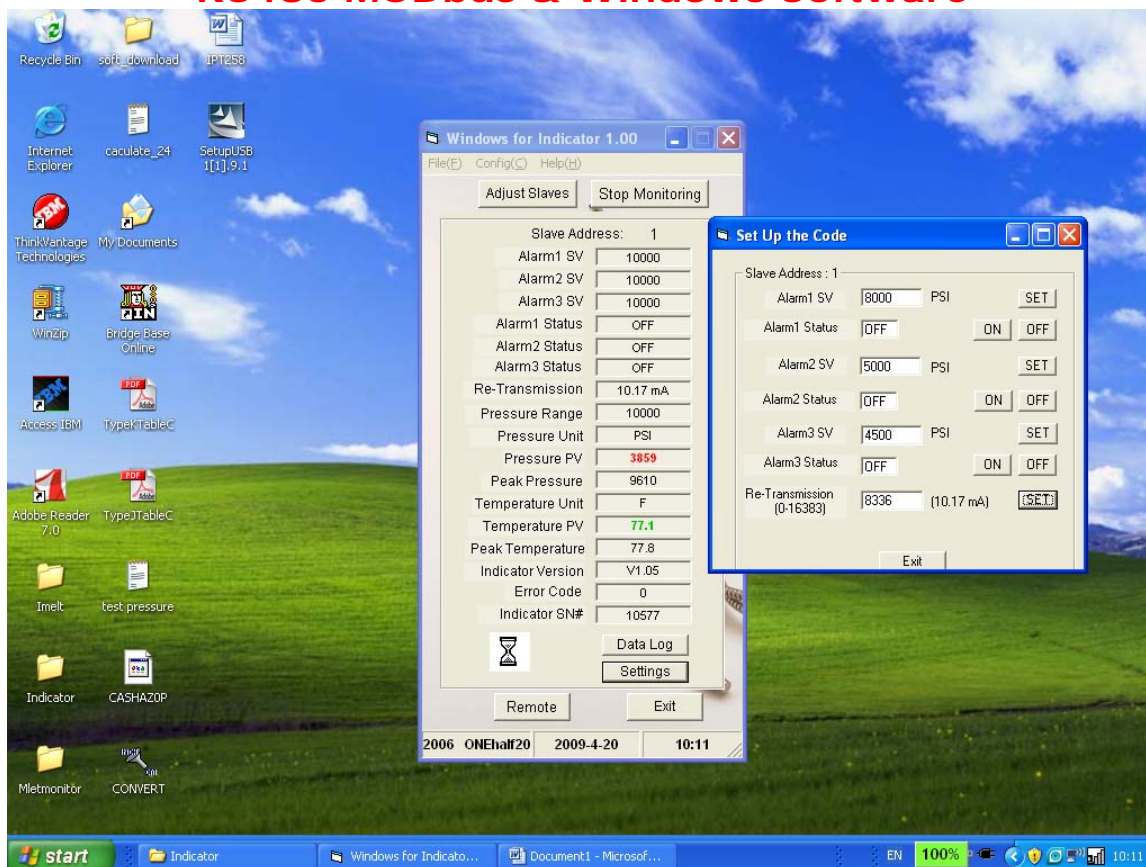


## 258 Series Addendum # 1

### RS485 MODbus & Windows Software



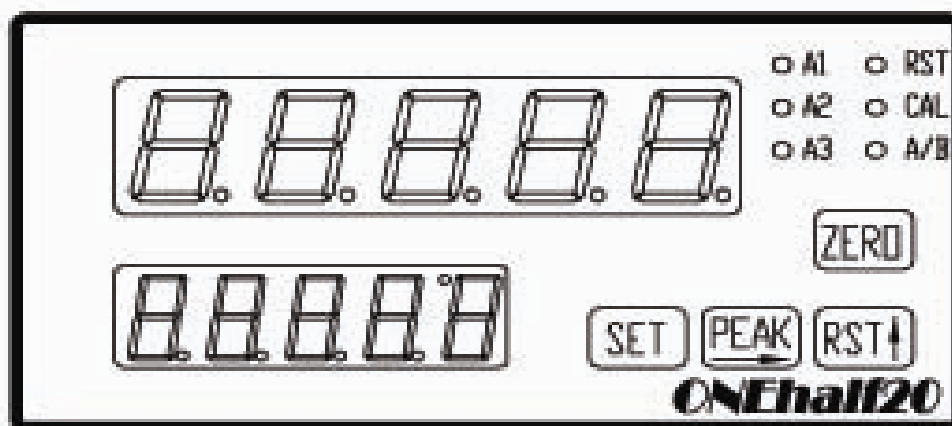
**NOTE:** Most modern computers are equipped with USB ports rather than RS485. In order to connect to a computer a USB/RS485 converter is recommended. ONEhalf20 offers a converter model USB/RS485-COMM1.

#### Configuration Menu - MODbus Settings

To enter the Configuration Menu refer to the 258 Series Operating Manual.

Code	Configuration (Default)
	Settings & definition
<b>U71</b>	<b>MODBus slave address</b> (Default 1)
	Adjustable from 1-99
<b>U72</b>	<b>MODBus baud rate</b> (Default 3=9,600bps)
	0=1,200 bps
	1=2,400 bps
	2=4,800 bps
	3=9,600 bps
	4=19,200 bps
	5=38,400 bps
<b>U73</b>	<b>MODBus parity check</b> (Default 0=non)
	0=non
	1=odd
	2=even

## 258 Series Front Panel Layout



### Front Panel Buttons

Zero sets the pressure value at zero or resets the peak values while flashing.  
Peak display flashes with the pressure and temperature peak values.  
RST manually resets the alarms.  
Set enters and exits the menus.

### Beacon's/LED's

AL1 Alarm 1 (flashing in early warning range)  
AL2 Alarm 2 (flashing in early warning range)  
AL3 Alarm 3 (flashing in early warning range)  
RST Remote alarm reset  
CAL Shunt calibration signal  
A/B indicates MODBus communications when flashing

### 258 Communications Wiring

**NOTE:** An RS485 terminal resistor is offered as a default within the 258 indicator. If you are communicating with more than (1) indicator you must reset the terminal resistor jumper on the power board inside the 258 indicator on all but the last one.

RS485 -B	RS485 +A						VAC 100/240	LN	Ground ⏏
11	12	13	14	15	16	17	18	19	20
1	2	3	4	5	6	7	8	9	10

**MODbus-RTU Protocol****Read/Write Content & Address (Hex Format)**

<b>Alarm 1 Set point (U12)</b>	OX0200
<b>Alarm 2 Set point (U22)</b>	OX0201
<b>Alarm 3 Set point (U32)</b>	OX0202
<b>Alarm 1 Status On/Off</b> U11 set as 9=CON alarm controlled through RS485 communications	OX0203
<b>Alarm 2 Status On/Off</b> U21 set as 9=CON alarm controlled through RS485 communications	OX0204
<b>Alarm 3 Status On/Off</b> U31 set as 9=CON alarm controlled through RS485 communications	OX0205
<b>Retransmission Value</b> U64 set as 1=the output controlled via RS485 communications. Value ranges from 0-16383 corresponding to 0-20mA.	OX0206

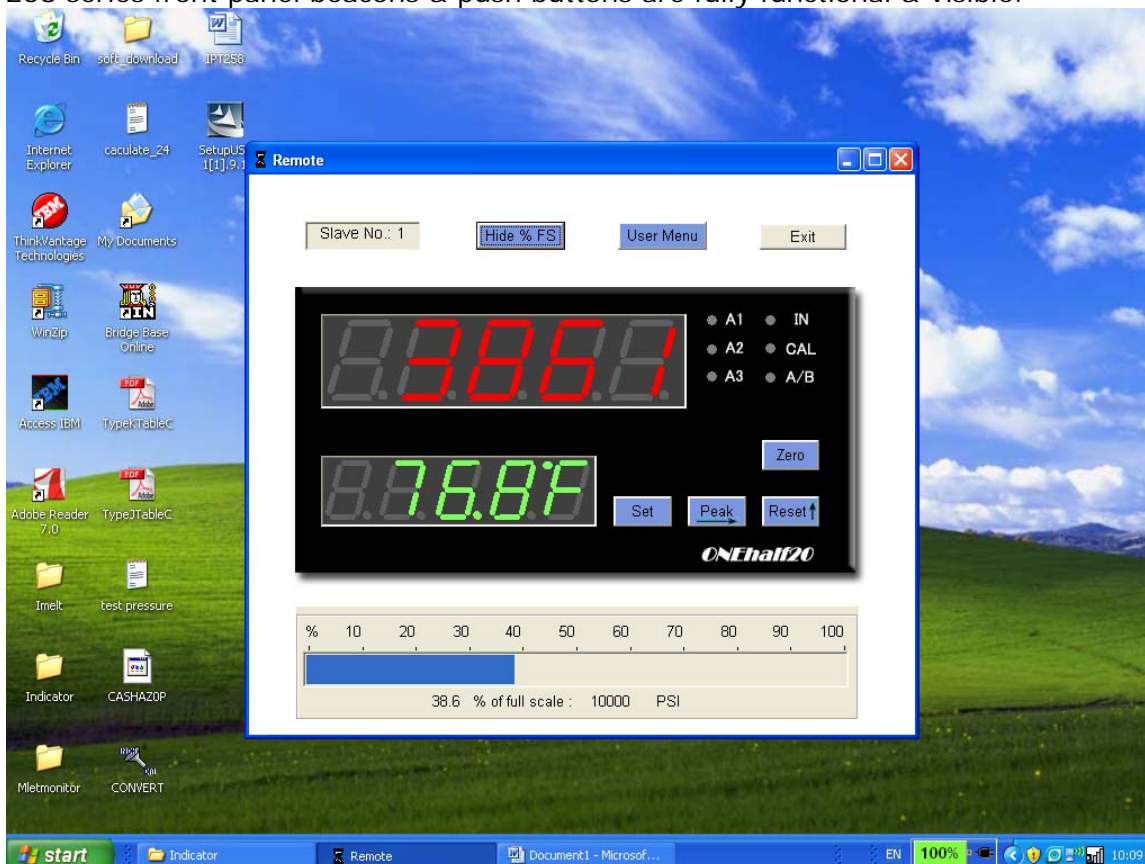
**Read Only Content & Address (Hex Format)**

<b>Full Scale Value FSV (U43)</b>	OX0207
<b>Pressure Unit (U41)</b>	OX0208
<b>Current Process Pressure Value</b>	OX0209
<b>Peak Pressure</b>	OX020A
<b>Temperature Unit (U46)</b>	OX020B
<b>Current Process Temperature Value</b>	OX020C
<b>Peak Temperature</b>	OX020D
<b>Software Version (U94)</b>	OX020E
<b>Error Codes (U96)</b>	OX020F
<b>Serial Number</b>	OX0210

**ONEhalf20 Windows Based Software**

ONEhalf20's Windows based software can also be used with the RS485 Communications Option. This proprietary software allows the user to program and set all of the configuration features of the 258 Series indicators without the need to use the (4) front panel buttons.

The software can also be used for data logging functions as well as remote real time monitoring of process Melt Pressure and Temperature Values. In addition all of the 258 series front panel beacons & push buttons are fully functional & visible.





### Frequently Asked Question's

#### 1. Why am I getting a run time error with my Windows software?

It is likely that your version of Windows is missing critical files. You will need to install (2) files MSCOMCTL.OCX & MSCOMM32.OCX into your windows//system32. You can obtain these files by contacting [www.microsoft.com](http://www.microsoft.com) or ONEhalf20.

### Technical Support

ONEhalf20 Inc.  
20 Steelcase Road, Unit 1A  
Markham, Ontario, Canada  
L3R 1B2

**North America Toll Free: 877-781-1881**  
**From Other Locations:**  
**Tel: (905) 474-5650**  
**By Email: [sales@onehalf20.com](mailto:sales@onehalf20.com)**

MODbus Addendum #1  
April 2009