



# Model RD6H-3/4 Extruder Rupture Disk with 3/4 - 16 UNF Mounting Thread

## Product Introduction

**ONEhalf20's** Model RD6H-3/4 Extruder Rupture Disk is designed for emergency relief of excess pressure in plastics processing machinery. It is designed to instantaneously rupture at a predetermined pressure. The Model RD6H-3/4 Extruder Rupture Disk is available in a variety of burst pressures.

The Model RD6H-3/4 may be specified for primary relief in applications where pressure build-up can occur so rapidly that the response time of a relief valve is inadequate.

## Features & Benefits

- burst pressures from 1,500 to 9,500 psi
- 3/4 x 16 UNF mounting thread
- SS or Inconel disk
- suitable for melt temperatures up to 825°F
- burst pressure accuracy +/- 5%
- low installation and maintenance cost
- all stainless steel body

## Model RD6H-3/4 Photo



## Ordering Guide

<u>Model Number</u>	<u>Length &amp; Installation</u>
---------------------	----------------------------------

RD6H-3/4	6.0" with hex head
----------	--------------------

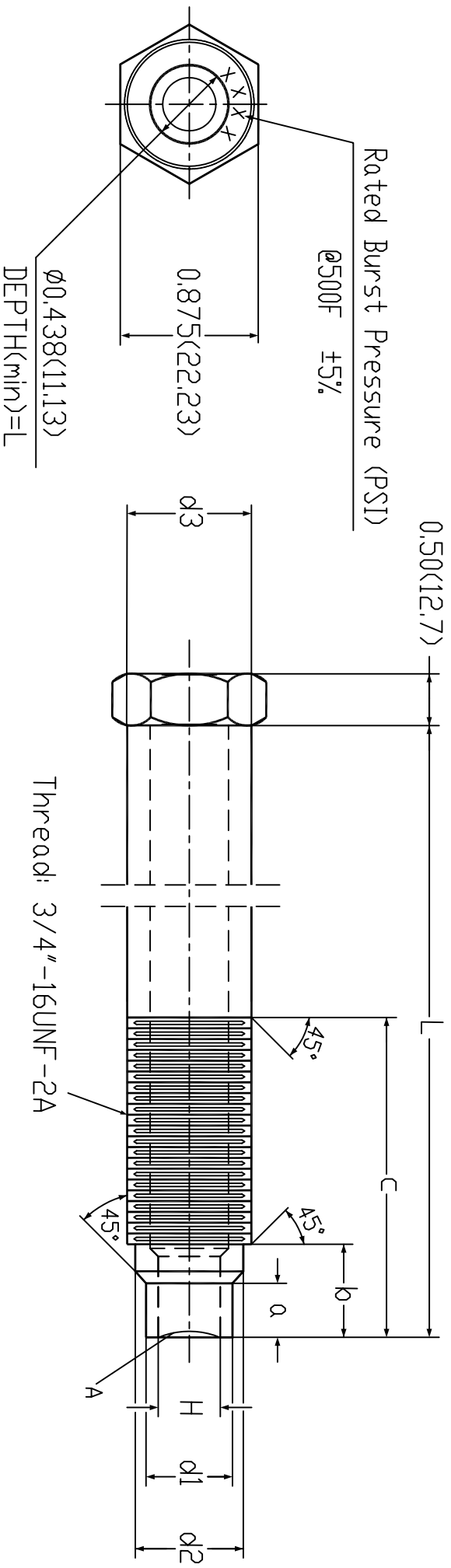
### Standard Rated Burst Pressures

-1.5M	1,500 psi
-2.5M	2,500 psi
-3.5M	3,500 psi
-4.5M	4,500 psi
-5M	5,000 psi
-7.5M	7,500 psi
-8.5M	8,500 psi
-9M	9,000 psi
-9.5M	9,500 psi

### **Note:**

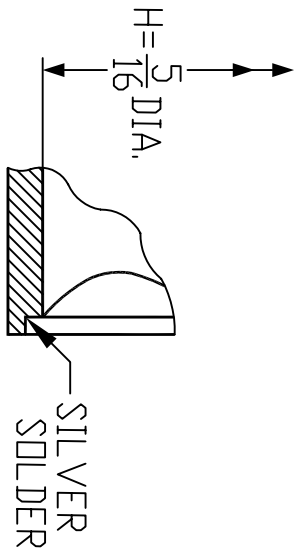
For burst pressures not listed please consult your **ONEhalf20** distributor.

**North America Toll Free 877 781-1881**  
**Other Locations 905 474-5650**  
**[www.onehalf20.com](http://www.onehalf20.com)**



a	b	c	L
0.300(7.62) 0.312(7.93)	0.545(13.84)	2.70(68.58)	6.00(152.4)

H	d1	d2	d3
5/16"(7.95)	ø0.500(12.70) ø0.495(12.57)	ø0.665(16.89) ø0.655(16.64)	ø0.66(16.76)



DETAIL A