

# **Model RD12H-3/4S Extruder Rupture Disk** with 3/4 - 16 UNF Short Mounting Thread

## Product Introduction

**ONEhalf20's** Model RD12H-3/4S Extruder Rupture Disk is designed for emergency relief of excess pressure in plastics processing machinery. It is designed to instantaneously rupture at a predetermined pressure. The Model RD12H-3/4S Extruder Rupture Disk is available in a variety of burst pressures.

The Model RD12H-3/4S may be specified for primary relief in applications where pressure build-up can occur so rapidly that the response time of a relief valve is inadequate.

## Features & Benefits

- burst pressures from 1,500 to 9,500 psi
- 3/4 x 16 UNF short mounting thread
- SS or Inconel disk
- suitable for melt temperatures up to 825°F
- burst pressure accuracy +/- 5%
- low installation and maintenance cost
- all stainless steel body

## Model RD12H-3/4S Photo



## Ordering Guide

<u>Model Number</u>	<u>Length &amp; Installation</u>
RD12H-3/4S	12.0" with hex head

### Standard Rated Burst Pressures

-1.5M	1,500 psi
-2.5M	2,500 psi
-3.5M	3,500 psi
-4.5M	4,500 psi
-5M	5,000 psi
-7.5M	7,500 psi
-8.5M	8,500 psi
-9M	9,000 psi
-9.5M	9,500 psi

<u>Option</u>	<u>Description</u>
-1/2NPT	1/2" NPT discharge connection

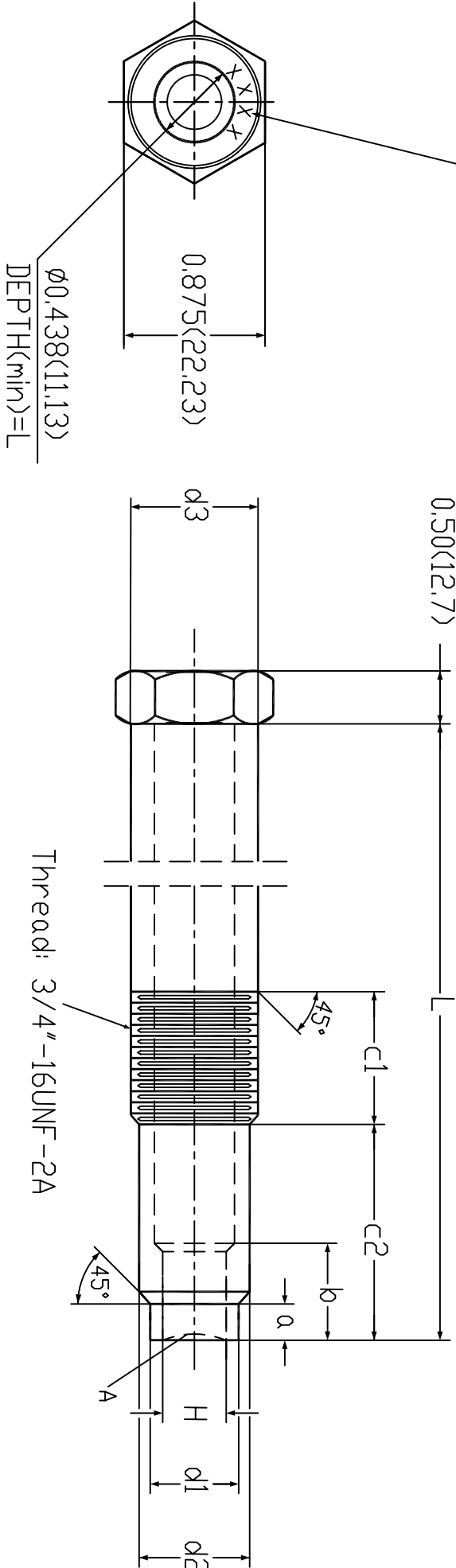
### **Note:**

For burst pressures not listed please consult your **ONEhalf20** distributor.

**North America Toll Free 877 781-1881**  
**Other Locations 905 474-5650**  
**[www.onehalf20.com](http://www.onehalf20.com)**

Rated Burst Pressure (PSI)

@500F ±5%



a	b	c1	c2	L
0.300(7.62) 0.312(7.93)	0.545(13.84)	1.10(27.94)	1.60(40.64)	12.00(304.8)

H	d1	d2	d3	
5/16"(7.95)	ø0.50(12.70) ø0.495(12.57)	ø0.665(16.89) ø0.655(16.64)	ø0.66(16.76)	

