

The logo for ONEhalf20, featuring the company name in a stylized, bold font with a horizontal line through the middle of the letters.

Model RD6H-5/8 Extruder Rupture Disk with 5/8 - 11NC Mounting Thread

Product Introduction

ONEhalf20's Model RD6H-5/8 Extruder Rupture Disk is designed for emergency relief of excess pressure in plastics processing machinery. It is designed to instantaneously rupture at a predetermined pressure. The Model RD6H-5/8 Extruder Rupture Disk is available in a variety of burst pressures.

The Model RD6H-5/8 may be specified for primary relief in applications where pressure build-up can occur so rapidly that the response time of a relief valve is inadequate.

Features & Benefits

- burst pressures from 1,500 to 15,000 psi
- 5/8 - 11NC mounting thread
- SS or Inconel disk
- suitable for melt temperatures up to 825°F
- burst pressure accuracy +/- 5%
- low installation and maintenance cost
- all stainless steel body

Model RD6H-5/8 Photo



Ordering Guide

<u>Model Number</u>	<u>Length & Installation</u>
---------------------	----------------------------------

RD6H-5/8	6.0" with hex head
----------	--------------------

<u>Standard Rated Burst Pressures</u>	
---------------------------------------	--

-1.5M	1,500 psi
-2.5M	2,500 psi
-3.5M	3,500 psi
-4.5M	4,500 psi
-5.5M	5,500 psi
-6.5M	6,500 psi
-7.5M	7,500 psi
-8.5M	8,500 psi
-9.5M	9,500 psi
-10.5M	10,500 psi
-12.5M	12,500 psi
-15M	15,000 psi

<u>Option</u>	<u>Description</u>
---------------	--------------------

1/4NPT	1/4" discharge connection
--------	---------------------------

Model RD6H-5/8 with 1/4NPT Photo



Note:

For burst pressures not listed please consult your **ONEhalf20** distributor..

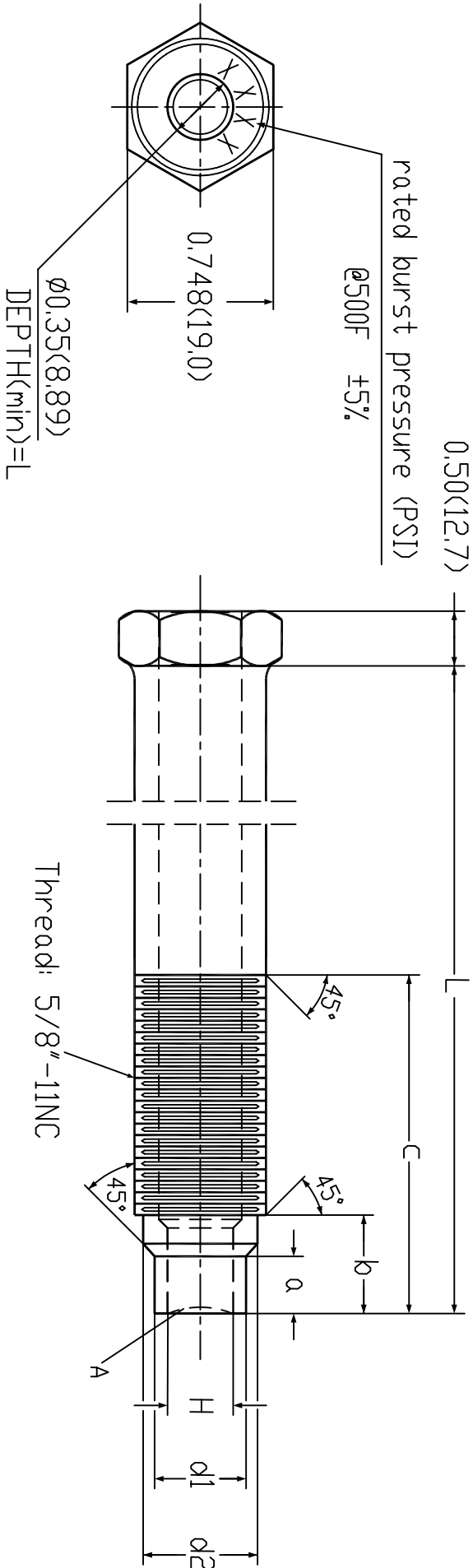
North America Toll Free 877 781-1881

Other Locations 905 474-5650

www.onehalf20.com

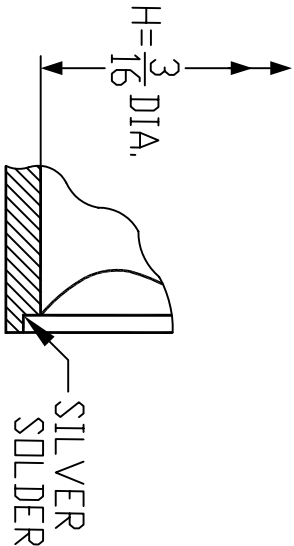


RD6H-XM-5/8
Dimensional Drawing Inches(mm)



a	b	c	L
0.238(6.05)	0.554(14.07)	2.75(69.85)	6.00(152.4)

H	d1	d2
3/16"(4.78)	0.354(8.99)	0.488(12.40)



DETAIL A

Rated Burst Pressure (PSI)

Ø500F ±5%

0.50(12.7)

L

C

0.875(22.22)

45°

45°

b

a

a

0.748(19.00)

Ø0.35(8.89)

DEPTH(min)=L

1/4"NPT

Thread: 5/8"-11NC

A

H

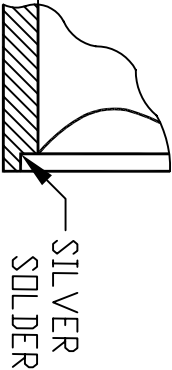
Ø1

Ø2

a	b	c	L
0.238(6.05)	0.554(14.07)	2.75(69.85)	6.00(152.4)

H	Ø1	Ø2
3/16"(4.78)	Ø0.354(8.99)	Ø0.488(12.40)

$H = \frac{3}{16}$ DIA.



DETAIL A