



Model RD6H-M18 Extruder Rupture Disk with M18 x 1.5 Mounting Thread

Product Introduction

ONEhalf20's Model RD6H-M18 Extruder Rupture Disk is designed for emergency relief of excess pressure in plastics processing machinery. It is designed to instantaneously rupture at a predetermined pressure. The Model RD6H-M18 Extruder Rupture Disk is available in a variety of burst pressures.

The Model RD6H-M18 may be specified for primary relief in applications where pressure build-up can occur so rapidly that the response time of a relief valve is inadequate.

Features & Benefits

- burst pressures from 1,500 to 15,000 psi
- M18 x 1.5 mounting thread
- SS or Inconel disk
- suitable for melt temperatures up to 825°F
- burst pressure accuracy +/- 5%
- low installation and maintenance cost
- all stainless steel body

Model RD6H-M18 Photo



Ordering Guide

<u>Model Number</u>	<u>Length & Installation</u>
---------------------	----------------------------------

RD6H-M18	6.0" with hex head
----------	--------------------

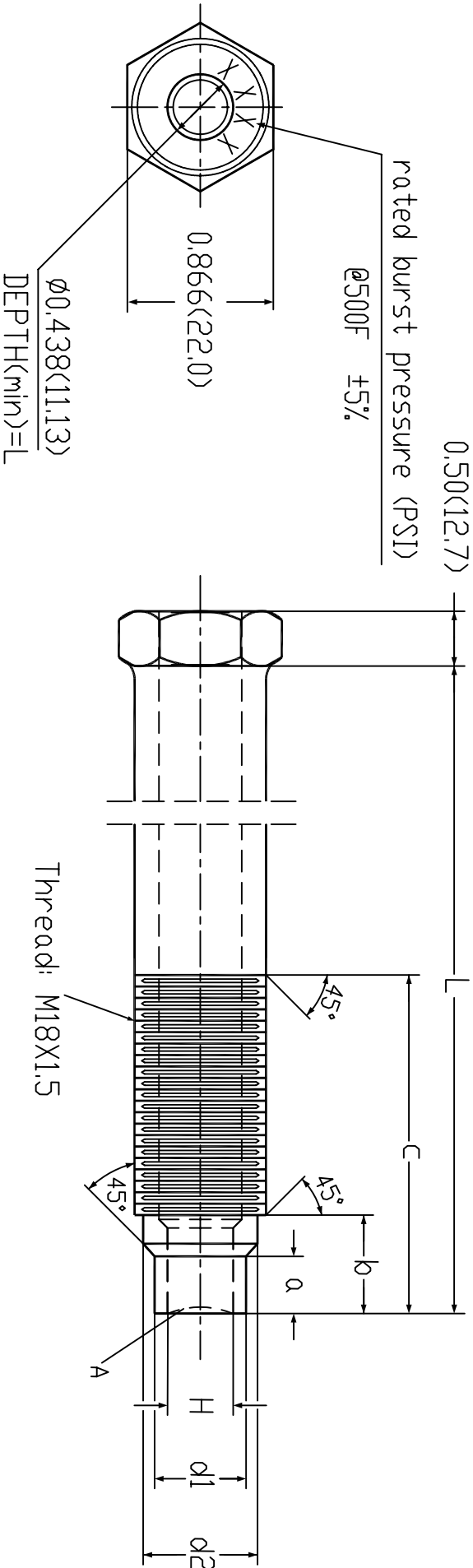
Standard Rated Burst Pressures

-1.5M	1,500 psi
-2.5M	2,500 psi
-3.5M	3,500 psi
-4.5M	4,500 psi
-5.5M	5,500 psi
-6.5M	6,500 psi
-7.5M	7,500 psi
-8.5M	8,500 psi
-9.5M	9,500 psi
-10.5M	10,500 psi
-12.5M	12,500 psi
-15M	15,000 psi

Note:

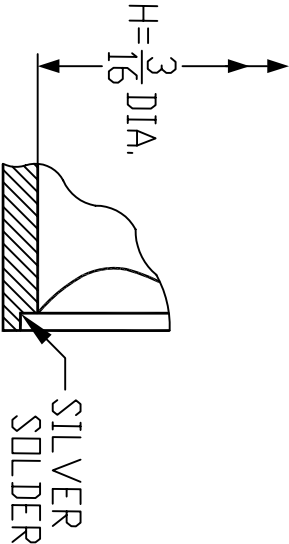
For burst pressures not listed please consult your **ONEhalf20** distributor..

North America Toll Free 877 781-1881
Other Locations 905 474-5650
www.onehalf20.com



a	b	c	L
0.250(6.35) 0.234(5.94)	0.50(12.7)	1.63(41.40)	6.00(152.4)

H	$\phi 1$	$\phi 2$
3/16"(4.78)	$\phi 0.397(10.08)$ $\phi 0.392(9.96)$	$\phi 0.632(16.05)$ $\phi 0.627(15.93)$



DETAIL A