



Model RD9H-3/4S

Extruder Rupture Disk

with 3/4 - 16 UNF Short Mounting Thread

Product Introduction

ONEhalf20's Model RD9H-3/4S Extruder Rupture Disk is designed for emergency relief of excess pressure in plastics processing machinery. It is designed to instantaneously rupture at a predetermined pressure. The Model RD9H-3/4S Extruder Rupture Disk is available in a variety of burst pressures.

The Model RD9H-3/4S may be specified for primary relief in applications where pressure build-up can occur so rapidly that the response time of a relief valve is inadequate.

Features & Benefits

- burst pressures from 1,500 to 9,500 psi
- 3/4 x 16 UNF short mounting thread
- SS or Inconel disk
- suitable for melt temperatures up to 825°F
- burst pressure accuracy +/- 5%
- low installation and maintenance cost
- all stainless steel body

Model RD9H-3/4S Photo



Ordering Guide

<u>Model Number</u>	<u>Length & Installation</u>
RD9H-3/4S	9.0" with hex head

Standard Rated Burst Pressures

-1.5M	1,500 psi
-2.5M	2,500 psi
-3.5M	3,500 psi
-4.5M	4,500 psi
-5M	5,000 psi
-7.5M	7,500 psi
-8.5M	8,500 psi
-9M	9,000 psi
-9.5M	9,500 psi

<u>Option</u>	<u>Description</u>
-1/2NPT	1/2" NPT discharge connection

Model RD9H-3/4S with 1/2NPT Discharge



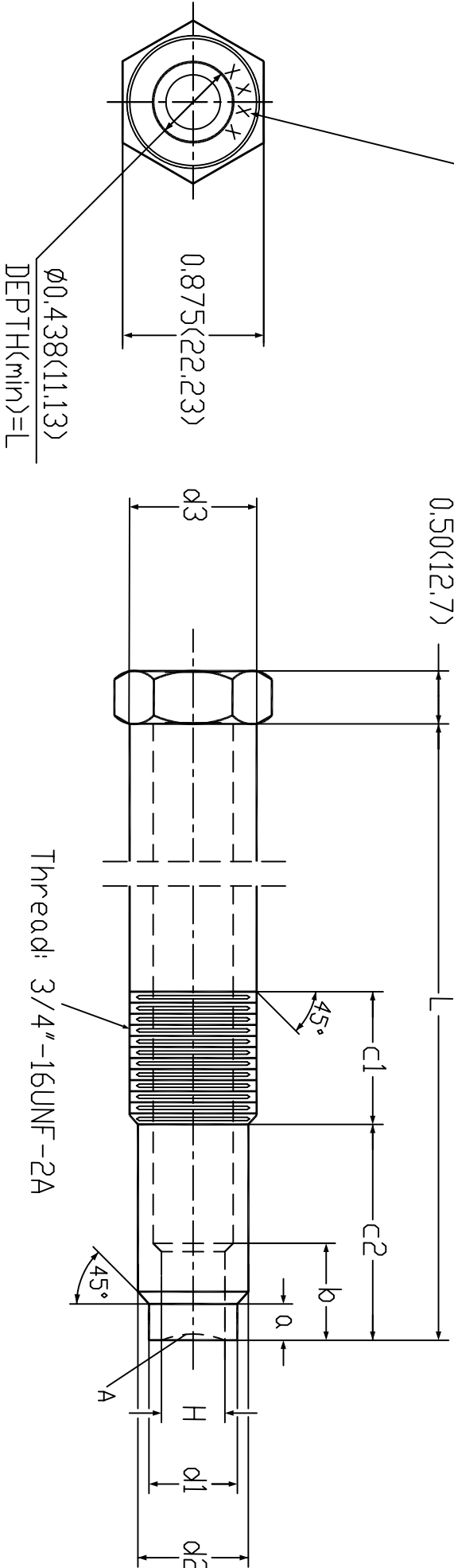
Note:

For burst pressures not listed please consult your **ONEhalf20** distributor.

North America Toll Free 877 781-1881
Other Locations 905 474-5650
www.onehalf20.com

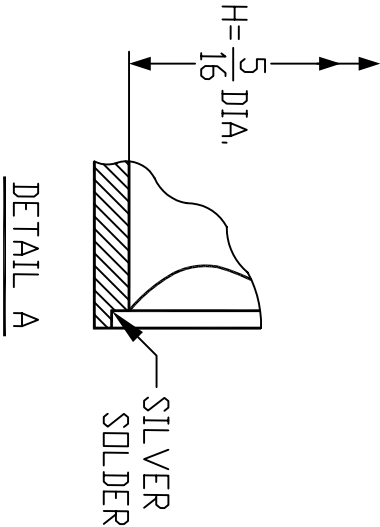
Rated Burst Pressure (PSI)

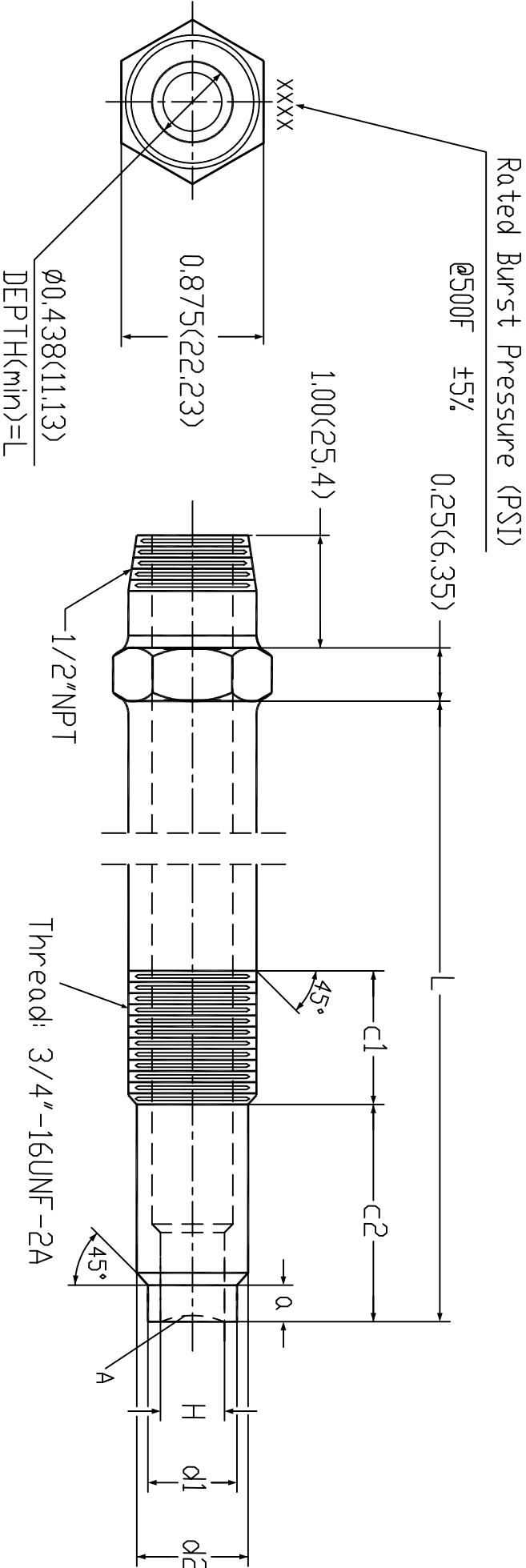
Ø500F ±5%



a	b	c1	c2	L
0.300(7.62) 0.312(7.93)	0.545(13.84)	1.10(27.94)	1.60(40.64)	9.00(228.6)

H	d1	d2	d3
5/16"(7.95)	Ø0.50(12.70) Ø0.495(12.57)	Ø0.665(16.89) Ø0.655(16.64)	Ø0.66(16.76)





Q	C1	C2	L
0.312(7.93) 0.300(7.62)	1.10(27.94)	1.60(40.64)	9.00(228.6)

H	d1	d2
5/16"(7.95)	$\varnothing 0.500(12.70)$ $\varnothing 0.495(12.57)$	0.665(16.89) 0.655(16.64)

