



# Model RD9H-5/8 Extruder Rupture Disk with 5/8 - 11NC Mounting Thread

## Product Introduction:

**ONEhalf20's** Model RD9H-5/8 Extruder Rupture Disk is designed for emergency relief of excess pressure in plastics processing machinery. It is designed to instantaneously rupture at a predetermined pressure. The Model RD9H-5/8 Extruder Rupture Disk is available in a variety of burst pressures.

The Model RD9H-5/8 may be specified for primary relief in applications where pressure build-up can occur so rapidly that the response time of a relief valve is inadequate.

## Features & Benefits

- burst pressures from 1,500 to 15,000 psi
- 5/8 - 11NC mounting thread
- SS or Inconel disk
- suitable for melt temperatures up to 825°F
- burst pressure accuracy +/- 5%
- low installation and maintenance cost
- all stainless steel body

## Model RD9H-5/8 Photo



## Ordering Guide

<u>Model Number</u>	<u>Length &amp; Installation</u>
RD9H-5/8	9.0" with hex head

### Standard Rated Burst Pressures

-1.5M	1,500 psi
-2.5M	2,500 psi
-3.5M	3,500 psi
-4.5M	4,500 psi
-5.5M	5,500 psi
-6.5M	6,500 psi
-7.5M	7,500 psi
-8.5M	8,500 psi
-9.5M	9,500 psi
-10.5M	10,500 psi
-12.5M	12,500 psi
-15M	15,000 psi

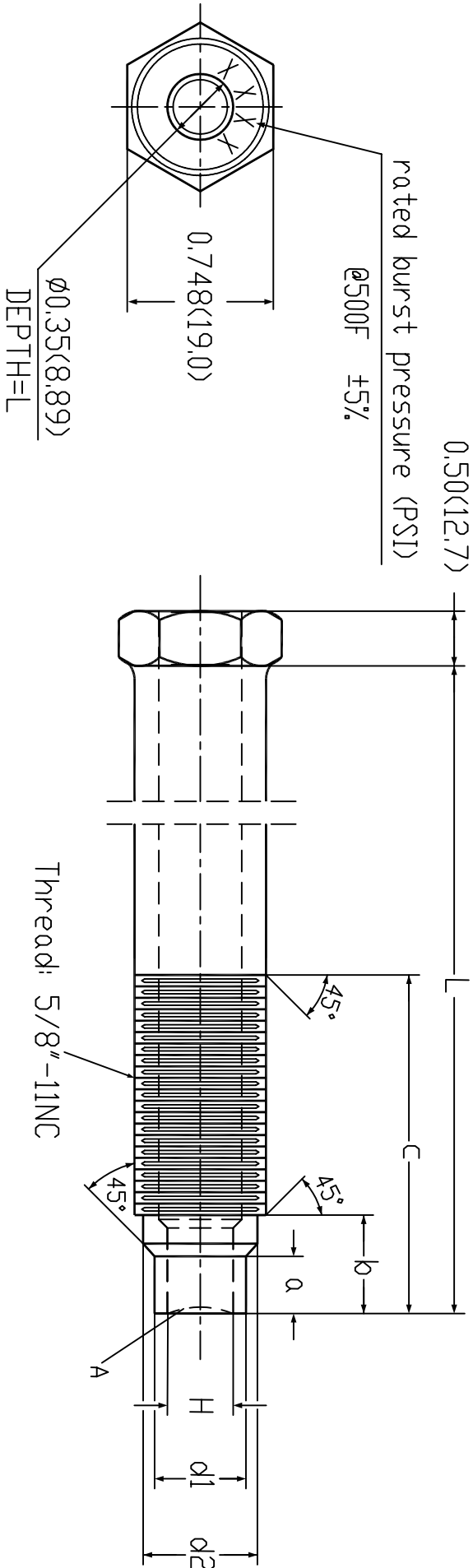
### **Note:**

For burst pressures not listed please consult your **ONEhalf20** distributor..

North America Toll Free 877 781-1881  
Other Locations 905 474-5650  
[www.onehalf20.com](http://www.onehalf20.com)

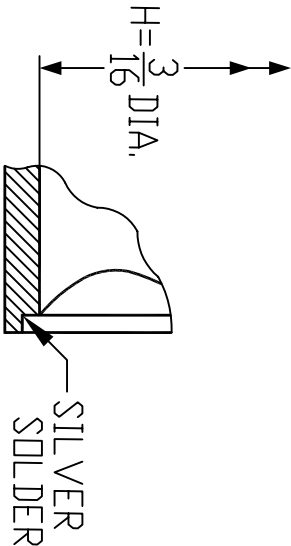


RD9H-XM-5/8  
Dimensional Drawing Inches(mm)



a	b	c	L
0.238(6.05)	0.554(14.07)	2.75(69.85)	9.00(228.6)

H	d1	d2
3/16"(4.78)	0.354(8.99)	0.488(12.40)



DETAIL A