

# REED Model R1930


## Light Meter, Compact Series

### Introduction

This compact light meter is capable of taking Lux and Footcandle (Fc) measurements. The R1930 features a backlit LCD display, data hold and min/max functions, low battery indicator and auto shut-off.

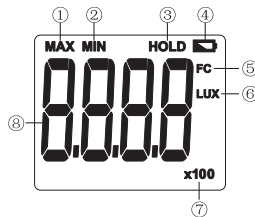
**Warning:**  
Before using the product, please read the operation manual carefully.

### Operation Safety

1. Check the meter before using to ensure the instrument is not damaged.
2. Do not open the meter.
3. When the LCD displays  replace battery as soon as possible.
4. Remove the batteries if the instrument will not be used for an extended period of time.
5. Do not use the meter in high temperature, humidity, flammable, combustible or strong electromagnetic environments.
6. Use a soft cloth and neutral detergent to clean the instrument. Do not use strong agents or solvents.

### Display Description

1. Maximum
2. Minimum
3. Data Hold
4. Low Battery Indicator
5. Foot Candle
6. Lux
7. Value 10 or Value 10
8. Illumination Value



### Key Functions & Setup

#### ON/OFF

Press once to turn on unit. Press again to power off. Disable the product's auto power off feature by pressing and holding **HOLD** and then press the **ON/OFF** key to enable/disable auto power off, LCD will display "APO OFF" to indicate status.

#### LUX/FC

Unit conversion button. Press this button to select Lux or Foot Candles.

#### MAX/MIN

Press this button to cycle through maximum, minimum and live measurement functions. Select maximum and the maximum reading will be shown; select minimum and the minimum reading will be shown.

#### HOLD/BL

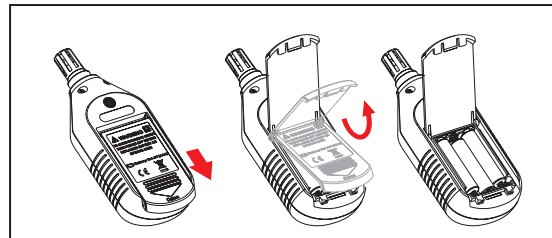
**HOLD:** Press the button once to hold the measurement and press it again to continue measuring.  
**BL:** Hold button to turn the backlight display on and off.

### Specifications

Measuring Ranges:	Lux: 0 to 199999 Fc: 0 to 18580
Accuracy:	0 to 9999 Lux (0 to 929 Fc): ±(4% rdg.+ 8 dgt) ≥10000 Lux (≥1000 Fc): ±(5% rdg.+ 10 dgt) ≥100000 Lux (≥9999 Fc): ±(5% rdg.+ 10 dgt)
Resolution:	0 to 9999 Fc: Fc = Lux/10.76 ≥10000 Fc: Fc = Lux/10.76 Lux: 1, 10, 100 Fc: 1, 10
Sensor Type:	Silicon photocell
Display:	4-digit LCD
Backlit Display:	Yes
Data Hold:	Yes
Minimum:	Yes
Maximum:	Yes
Overrange Indicator:	Yes
Sampling Rate:	2 times/second
Auto Shut-Off:	Yes (after 5 minutes, off)
Low Battery Indicator:	Yes
Power Supply:	3 "AAA" batteries
Product Certifications:	CE
Storage Temperature:	4 to 140°F (-10 to 60°C)
Operating Humidity Range:	10 to 80%
Dimensions:	6.3 x 1.9 x 1.1"
Poids:	4.2oz (118g)

### Battery Installation and Replacement

1. This meter uses 3 AAA batteries. Refer to the figure below for battery installation and replacement steps.
2. Push the battery cover open in the direction of the arrow, lift the cover and remove the batteries.
3. Install new batteries in accordance of polarity indications.
4. Close the cover tightly after installing new batteries.



For service or information on this or any other REED product, contact REED Instruments at [info@reedinstruments.com](mailto:info@reedinstruments.com).